



**ALUFLEX**  
**INSULATED ROLLER SHUTTERS - DATA SHEET**

**SHUTTER CURTAIN**

Manufactured from aluminium interlocking sections, 100mm deep, with twin ribbed faces for rigidity, specially coated with ARS Goosewing Grey paint system producing a hardwearing door panel coating. Designed to provide a hollow section panel with CFC and HCFC free foam thermal infill.

**END LOCKS**

The curtain, when assembled is held in position with purposely-designed injection moulded end fittings, manufactured from hardwearing nylon-6.

**BOTTOM SEAL**

The bottom panel of the shutter is terminated with a purpose designed yellow plastic extrusion complete with interlocking (EPDM) rubber weather seal.

**BARREL**

Manufactured from seamless mild steel tube to BS4760 Grade 50C. Size to suit door width and height. Maximum barrel deflection 1:400. Fitted with precision-machined BDMS axles to BS970 EN33 blocks. Sealed with protective paint.

**MAIN SUPPORT BRACKETS**

The main support brackets for the barrel and motor unit are manufactured from mild steel plates of varying thickness to suit the door weight and incorporate the necessary fixing positions for securing back to the opening structure.

**VERTICAL SIDE GUIDES**

Formed from pre-galvanised material having a minimum thickness of 2.5mm incorporating twin vertical brushes on both inner and outer face of the guide. Brush carrier is constructed from PVC of medium impact strength, finished black and incorporating twin siliconised polypropylene weather strips, these running the full height of the door guide. The guide form is designed to allow reduced working faces and tapered inner faces to provide automatic interlocking/retaining feature for performance under wind load. Complete with continuous 100 x 65 galvanised fixing angle.

**OPERATION**

The door is arranged for an electric motor unit with manual hand hoisting and lowering facility. The motor unit is complete with an in-built safety drive system. Operating voltage 400V 3 phase IP54 protection 60% duty cycle maintenance free and TUV tested, complying with all current European safety standards.

**SOUND REDUCTION/THERMAL INSULATION**

The Aluflex roller shutter has a weighted sound reduction value of 18dB (BS 5821 Part 3: 1984) and an insulation value of 1.4 W/M<sup>2</sup>

**Technical information**

**Certification**

**CE Mark** (Declaration of conformity)

**Type Approval** (Chiltern Dynamics - UKAS approved test laboratory)

**Mechanical Aspects** EN12604, Safety in use of power operated doors

**Side guide protection** EN 12604: 2000 4.5.1 and EN 12453: 2000 5.1.1.3

**Protection** Against crushing, shearing or drawing in

**Electrical Safety** Depending on the use

**Water Tightness** EN 12489

**Resistance to Wind Load** EN 12444

**Thermal resistance** EN 12428

**Air permeability** EN 12427

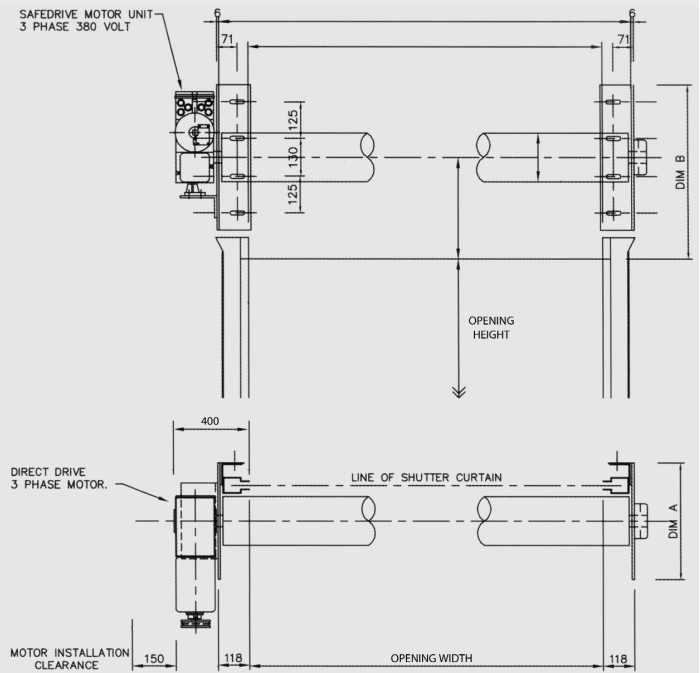
**Opto Safety Edge Self Monitoring** EN 12453 - 5.1.1.5

**Closing Forces (Auto close only)** EN 12453 - 5.1.1.5

**Anti fall back device** EN 12453 - 5.1.1.5

**Installation Instructions** EN 12635: 2002 4.1.1.1

**Durability of Mechanical Performance** EN 12635: 2002 4.1.1.1



WIDTH	HEIGHT	DIM A	DIM B
2500	2500	430	525
4000	4000	500	595
5000	5000	550	645
6000	6000	600	695

All Dimensions in mm

